

SECTION 11110

LAUNDRY WASHER-EXTRACTOR, 125 LB. (56.7 KG) CAPACITY

PART 1 GENERAL

1.01 SECTION INCLUDES:

- A. Automatic laundry washer-extractor for processing water-washed linen items

1.02 SYSTEM DESCRIPTION

A. DESIGN REQUIREMENTS:

1. Construction: 304 or equal stainless steel cylinder, tub & cover panels
2. Input voltage: 208-240/60/3, 3 wire plus ground
3. Dry weight capacity: 125 lb. (56.9 kg)
4. Wash cylinder volume: 19.4 cu ft (544 L) minimum
5. Overall width: 48 inches (1219 mm) nominal
6. Overall height: 72 inches (1473 mm) nominal
7. Overall depth: 58 inches (1829 mm) nominal
8. Number & size of water supply inlet valves: 2 at 3/4 inch (19 mm), with 3/4 inch (19 mm) NH male connections
9. Number & size of drain outlets: 1 at 3 inch (76 mm)
10. Overflow: Internally plumbed
11. Control system: Programmable microprocessor
12. Cylinder drive: Single motor, 10 hp, capable of 550 RPM maximum

B. PERFORMANCE REQUIREMENTS:

1. Number of programmable cylinder speeds: 5
2. G-force at highest extract speed: 180 G's
3. Chemical supply system
 - a. manually filled 5 compartment dry chemical dispensing system
 - b. automatic flushing & connections for 5 external supply lines & control signals for 5 external supplies
4. Control system
 - a. Programmable microprocessor; machine keypad, Windows PDA/laptop
 - b. 30 cycle capacity
 - c. 30 programmable water levels
 - d. Real-time clock to record events by date and time
 - e. Cycle counter
 - f. Temperature controlled fill and thermal cool-down capability
 - g. Water monitoring: slow drain and automatic leak detection system
 - h. Diagnostic capabilities

5. Drain valve automatically opens in event of power failure

1.03 DELIVERY, STORAGE & HANDLING

A. ACCEPTANCE AT SITE:

1. Inspect machine for damage prior to acceptance. If damage is found, follow freight handler's procedure for claims.

B. STORAGE & PROTECTION

1. Machine should be stored in a site protected from weather, direct sunlight & temperature extremes. Do not remove packaging prior to storage.
2. If machine is to be stored for an extended period of time, consult manufacturer for special requirements.

1.04 SYSTEM STARTUP & COMMISSIONING

- A. Machine installation should be inspected by local manufacturer's representative prior to startup & operation. The party installing the machine is responsible for setting the schedule for this inspection.

PART 2 PRODUCTS

- A. Source quality
- B. Alliance Laundry Systems LLC - UniMac, obtain commercial laundry equipment from a single manufacturer

1.02 QUALIFIED MODELS

- A. UniMac model **UWN125K1M** (no substitutions)

PART 3 EXECUTION

1.01 INSTALLATION

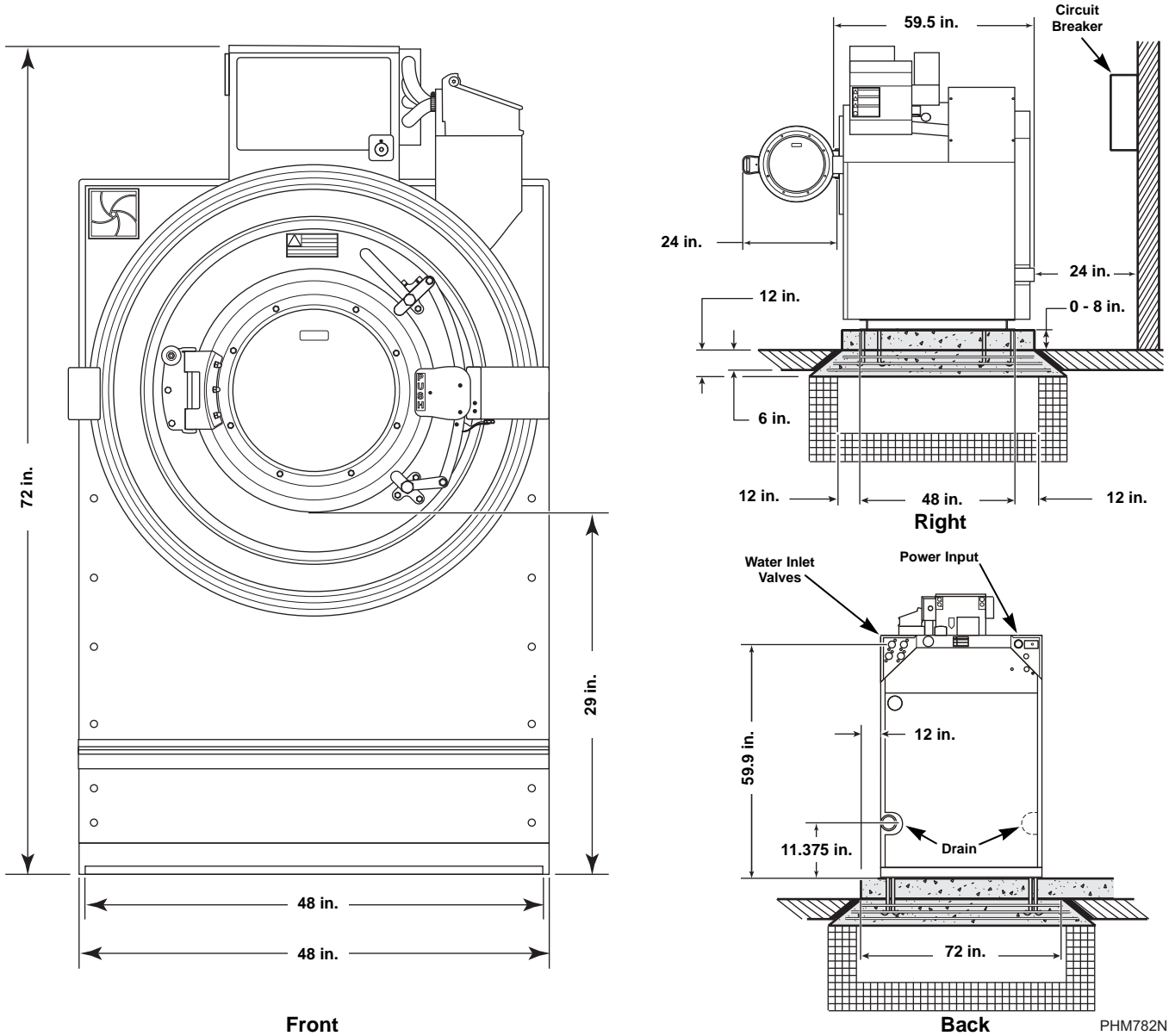
- A. Refer to & comply with manufacturer's installation instructions. Do not deviate without permission from site owner, architect, general contractor & manufacturer's local representative.

Machine Dimensions and Specifications

Models UWN125K1MQ and UWN125K1MR



Dimensions and Foundation Requirements



Electrical Specifications

Voltage Designation					Non-Electric Heat Machines (Standard)			
Code	Voltage	Cycle	Phase	Wire	Full Load Amps	Breaker (Non Fused)	AWG	mm ²
Q	200-240	50/60	3	3	9	15	14	2.5
R	308-480	50/60	3	3	8	15	14	2.5

Water, Drain and Weight Specifications

Drain: Number (Size)	2 (3 in.)
Fill Water Inlets: Number (Size)	2 (1 in.)
Weight: Machine (With Shipping Packaging)	2420 lbs. (2525 lbs.)
Side Clearance:	6 in. (minimum) 18 in. (recommended)